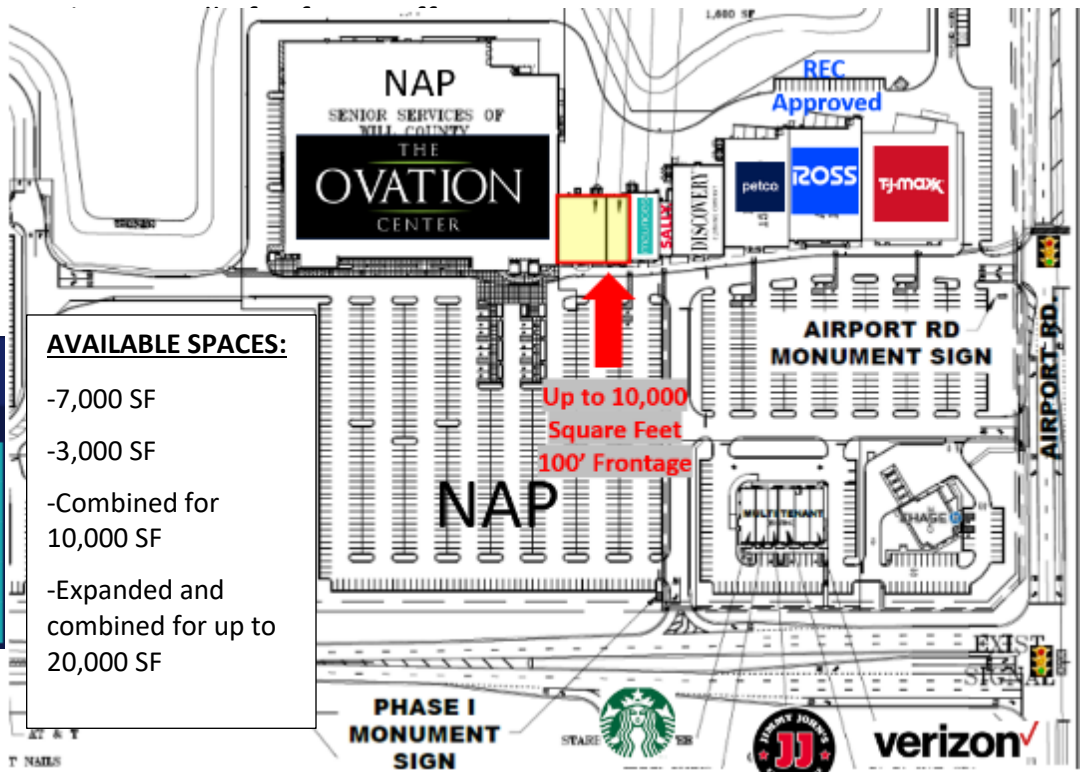


Shoppes at Romeoville - Remewville (Chicago MSA), IL

375 S Weber Road, Romeoville, IL 60446



- **Solid foundation of anchors** with TJ Maxx, Petco, Discovery
- **Leasing momentum with REC approved ROSS (at lease);** several other national tenant LOIs; grocer interest for adjacent land
- Strategically located along S Weber Rd at Airport Rd with combined **traffic counts of >40,000 vpd** (~34,000 @ ~10,000)
- **Significant population density** of +145,000 in a 5-mile radius
- **Good incomes** with \$110,000+ average household income in a 5-mile radius
- **Low Tax** township & county (Will County)
- Catty-corner to Walmart Supercenter that ranks in the top



AVAILABLE SPACES:

- 7,000 SF
- 3,000 SF
- Combined for 10,000 SF
- Expanded and combined for up to 20,000 SF

| Trade Area Demographics | |
|------------------------------|---------|
| SUMMARY | |
| TOTAL POPULATION | 202.4K |
| TOTAL HOUSEHOLDS | 67.9K |
| MEDIAN HOUSEHOLD INCOME | \$84.9K |
| 5-YEAR HOUSEHOLD GROWTH RATE | 5.4% |
| MEDIAN AGE | 39 |

For More Info: NATIONAL Tenants – kevin@pmat.com; LOCAL - Leasing@pmat.net or 202-780-PMAT (7628)

Shoppes at Romeoville - Remewville (Chicago MSA), IL

375 S Weber Road, Romeoville, IL 60446



PMAT Companies

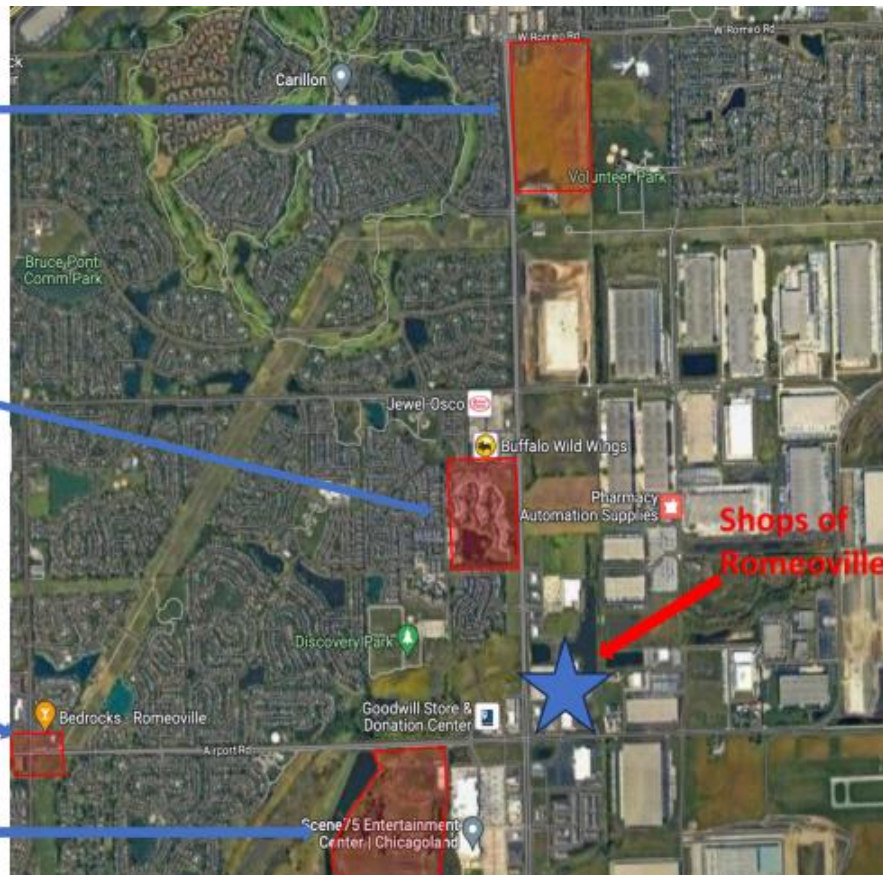


- Residential development by Edward Rose for 880 units on 69 acres for apartments, townhomes, and senior housing. Construction starting in the Spring of 24'

- High Point Community Apartments 624 unit on-going residential development

- A single-story, 66,259 square foot building with sections for both regular assisted living and memory care. 81 units, with 26 being for memory care

- 80 acres development for apartments and single-family homes



For More Info: NATIONAL Tenants – kevin@pmat.com; LOCAL - Leasing@pmat.net or 202-780-PMAT (7628)